

WESTERN NEON

CAPABILITIES DOCUMENT



WHO WE ARE

1985-1990

The Gallery

Inspired by their father and neon pioneer Dean, Jay and Michael Blazek move from Antigo, WI to Seattle, WA. There they opened Western Neon, one of the west coast's first galleries devoted to light, space, and interactive technologies.

1990-2012

Sign Shop

The gallery organically grew into an established custom sign shop with an expansive sense of creativity and resourcefulness firmly rooted in its DNA. The shop completed iconic projects throughout the region and beyond with select clients: Amazon, Microsoft, Rainier, Pabst, Nike, City Light, Seattle Art Museum, Rachel's Ginger Beer, The W Hotel, and Dale Chihuly.

2012 - Future

CONCEPT/DESIGN/BUILD

Current owner André Lucero established a new location for the business. The new space has evolved into a unified location for custom design and fabrication, focusing on signage, interiors, and public art for all aspects of the built environment.



1985 - 1990



1990 - 2012



2012 - FUTURE



WESTERN NEON

2902 4th Ave S. 206.682.7738
Seattle WA 98134 westernneon.com

WHAT WE DO

SIGNAGE

Drawing from a rich history creating both illuminated and non-illuminated elements, WN designs, builds, and installs an array of solutions. From monumental rooftop and pylon elements to canopy pieces, storefronts, banners, and master plan way-finding options, we focus on craftsmanship, efficiency, and low-impact maintenance.

INTERIORS

WN offers an extensive set of responsive approaches for all scopes of interior work. From standard or customized ADA compliant way-finding packages to environmental graphics, wall-to-wall printing and framing, commercial fixtures, and illuminated neon or LED focused artwork, we provide ultra-quick design to installation timelines.

PUBLIC ART

Since its inception, WN has worked with artists, designers, architects, contractors, corporations, and municipalities on a diverse range of site-specific, technical, and high-risk projects. From exterior large-scale works to experiential environments, WN is a full public art service provider offering all aspects of design, engineering, code research, fabrication options, lighting, installation, and project management. Our teams ensure every project is successful, meets the budget, and is safely delivered on time.



WESTERN NEON

2902 4th Ave S. 206.682.7738
Seattle WA 98134 westernneon.com

SIGNAGE

PCC

Process: Fabricated aluminum reverse channel letter forms, single strand LED segments, acrylic, vinyl, enamel paint, clear enamel finish, hardware.

Location: Burien, WA

KEXP

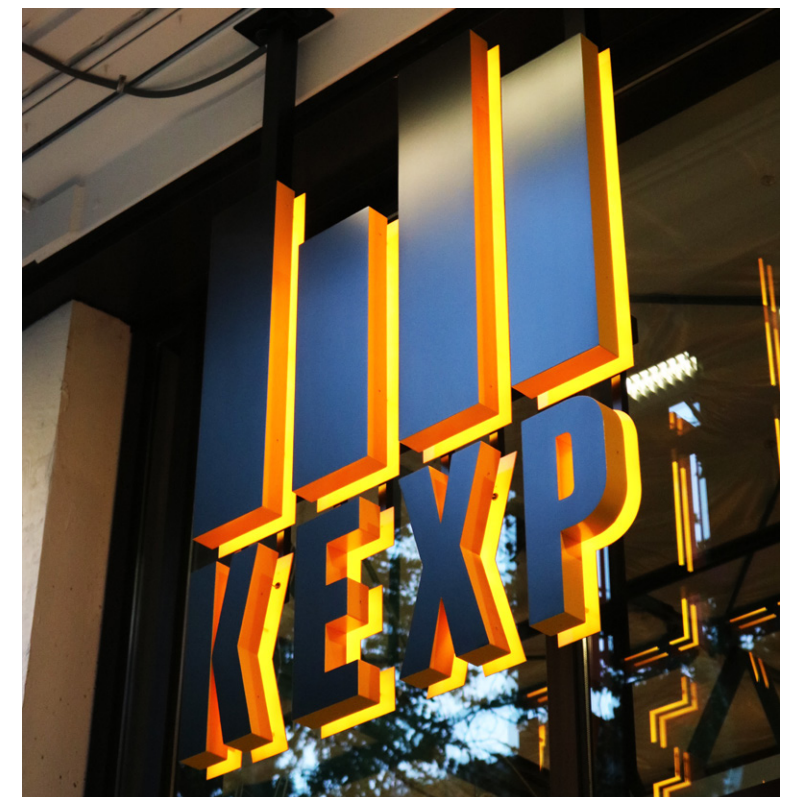
Process: Fabricated aluminum, LED array, power drivers, enamel paint, clear enamel finish, hardware.

Location: Seattle, WA

NIKE

Process: Argon, mercury, glass, copper, fabricated aluminum armature, enamel paint, transformers, hardware.

Location: Seattle, WA



WESTERN NEON

2902 4th Ave S. 206.682.7738
Seattle WA 98134 westernneon.com

INTERIORS

MOHAI

Process: Fabricated aluminum, neon, LED lighting solution with enamel paint, clear enamel finish, hardware.

Location: Seattle, WA

AMAZON BLOCK 21

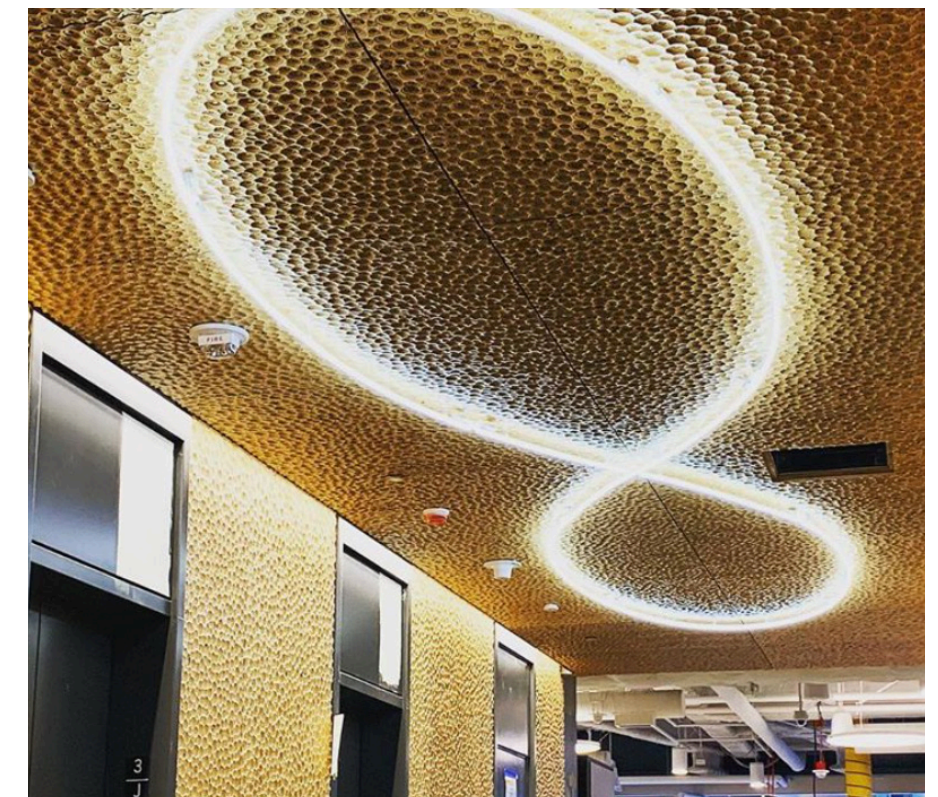
Process: Neon tubing mounted to architectural textured ceiling in lobby.

Location: Seattle, WA

IMPINJ

Process: Cut frosted vinyl, cut colored vinyl applied to glass panels.

Location: Seattle, WA



WESTERN NEON

2902 4th Ave S. 206.682.7738
Seattle WA 98134 westernneon.com

PUBLIC ART

ELEMENTUM I

Process: Fabricated aluminum armature, sustainability harvested cedar, stainless steel hardware.

Location: Edmonds, WA

SCREENS

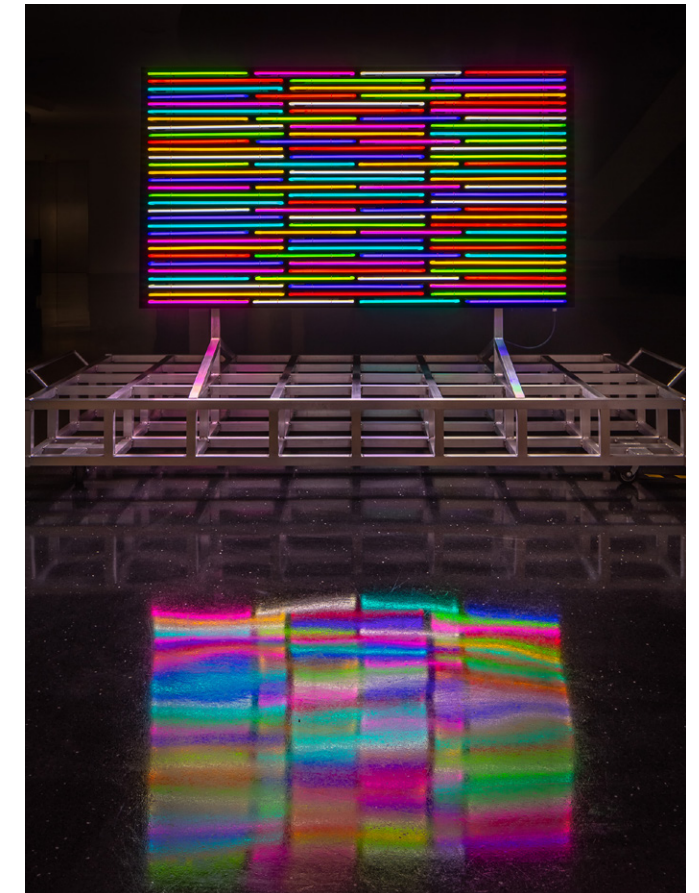
Process: Argon, mercury, glass, copper, custom software, DMX controller, power banks, analog interface, 104 transformers, hardware

Location: Bellevue, WA

CITY OF OLYMPIA

Process: Digitally printed vinyl applied to over 15 existing utility boxes.

Location: Olympia, WA



WESTERN NEON

2902 4th Ave S. 206.682.7738
Seattle WA 98134 westernneon.com

HOW WE DO IT

CONCEPT

All projects large or small start with one very important thing, a dream, which is really just an idea waiting to become a reality. It is our job at WN to both understand and clearly articulate these ideas with a client and our team so that the right seed gets planted for a successful design.

DESIGN

WN takes the right seed from a concept through a collaborative, multi-level agency style approach ensuring all aspects of a client's idea become known and estimate-ready so all stakeholders understand the costs involved before projects are accurately built, engineered, or permitted.

BUILD

Once a project moves from a concept into a contracted design, WN employs an adaptive department-driven process overseen by a dedicated project manager, effectively making an idea a reality from start to finish.



WESTERN NEON

2902 4th Ave S. 206.682.7738
Seattle WA 98134 westernneon.com

SOLUTIONS

START TO FINISH

Solutions define our work-flow. From the initial meeting to the final task, our team is with you the entire way. We have an array of tools and talent across our integrated departments, ensuring your project is a priority at every point in the life-cycle, striving to meet all client budgets and timelines efficiently.



CLIENT SERVICES

- PROJECT MANAGEMENT
- PRICING CONSULTATION
- PERMITTING CONSULTATION
- BUDGET ANALYSIS
- CONSTRUCTION MANAGEMENT
- CODE RESEARCH
- ENVIRONMENTAL IMPACT



DESIGN

- CONCEPT ART
- SHOP DRAWINGS
- 3D RENDERINGS
- MATERIAL SPECIFICATION
- ADOBE SUITE
- SKETCHUP
- SOLIDWORKS



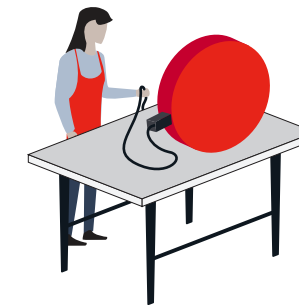
PRODUCTION

- ALUMINUM FABRICATION
- PAINTING/CUSTOM FINISHING
- 3D PRINTING
- VINYL
- ADA/BRAILLE
- LASER-CUTTING



INSTALLATION

- SAFETY MANAGEMENT
- JOURNEYMAN ELECTRICIAN
- FLEET



SERVICE

- SAFETY MANAGEMENT
- JOURNEYMAN ELECTRICIAN
- FLEET
- PRIORITY SCHEDULING
- 2 YEAR WARRANTY PROGRAM



WESTERN NEON

2902 4th Ave S. 206.682.7738
Seattle WA 98134 westernneon.com

CONTACT

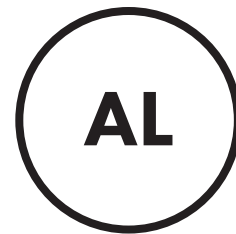
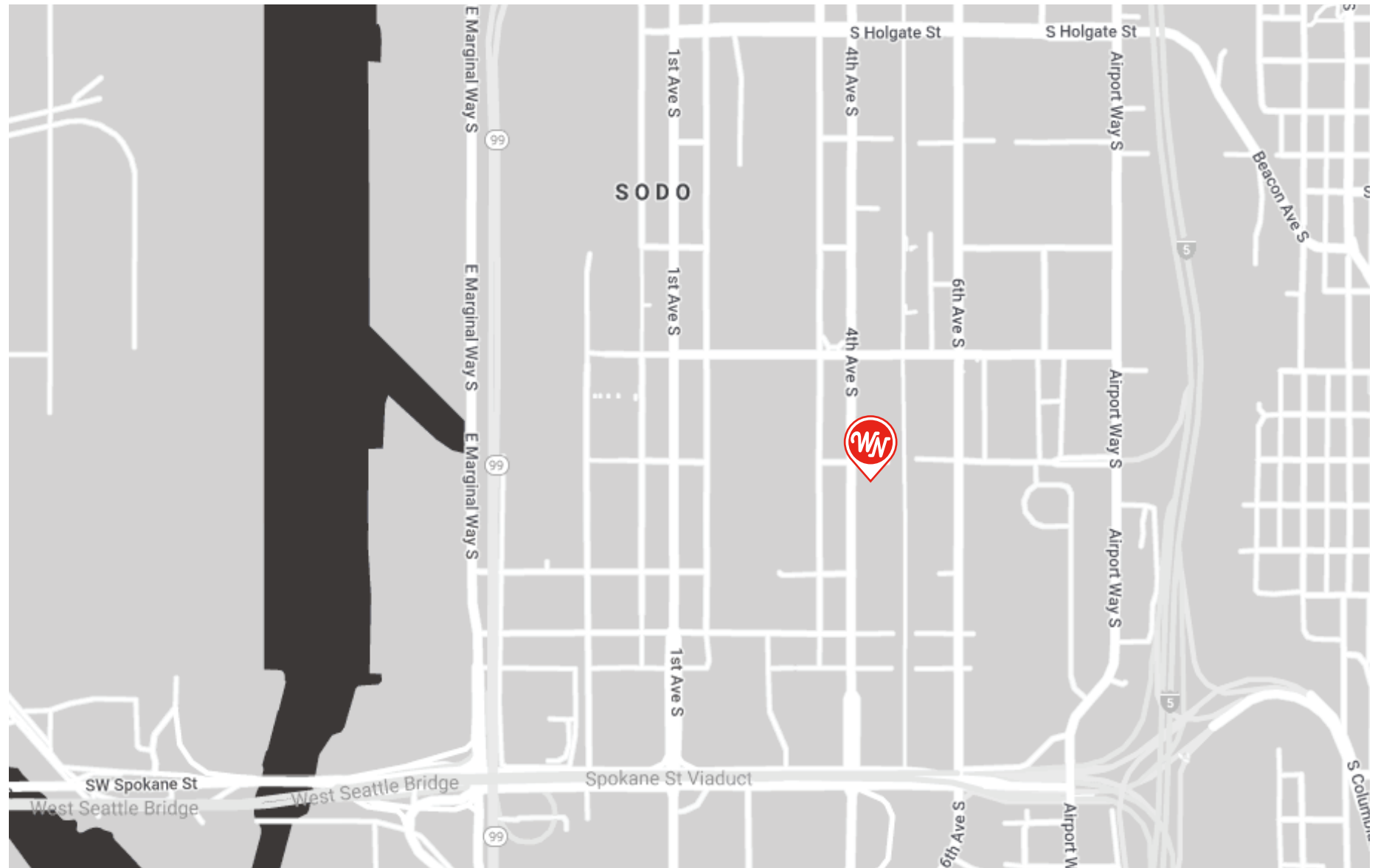
ON LOCATION

Our shop and offices are located in the SODO neighborhood of Seattle. Come see the light in our showroom and take a tour of our departments.

2902 4th Ave South
Seattle WA 98134
206.682.7738

ONLINE

IG - @westernneonseattle
WEB - www.westernneon.com



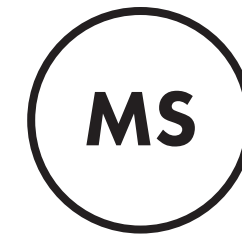
André Lucero
President

main: 206.682.7738
direct: 206.456.9830
andre@westernneon.com



Dylan Neuwirth
Creative Director

main: 206.682.7738
direct: 206.456.9847
dylan@westernneon.com



Mike Spear
Client Services

main: 206.682.7738
direct: 206.456.9833
mike@westernneon.com



WESTERN NEON

2902 4th Ave S. 206.682.7738
Seattle WA 98134 westernneon.com

THANK YOU

NOW, LET'S TALK ABOUT YOU

